



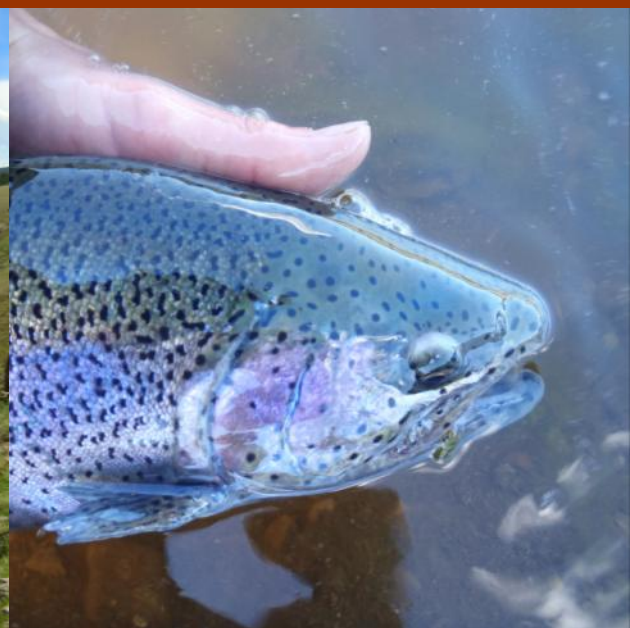
THE BRAZOS RIVER RANCH

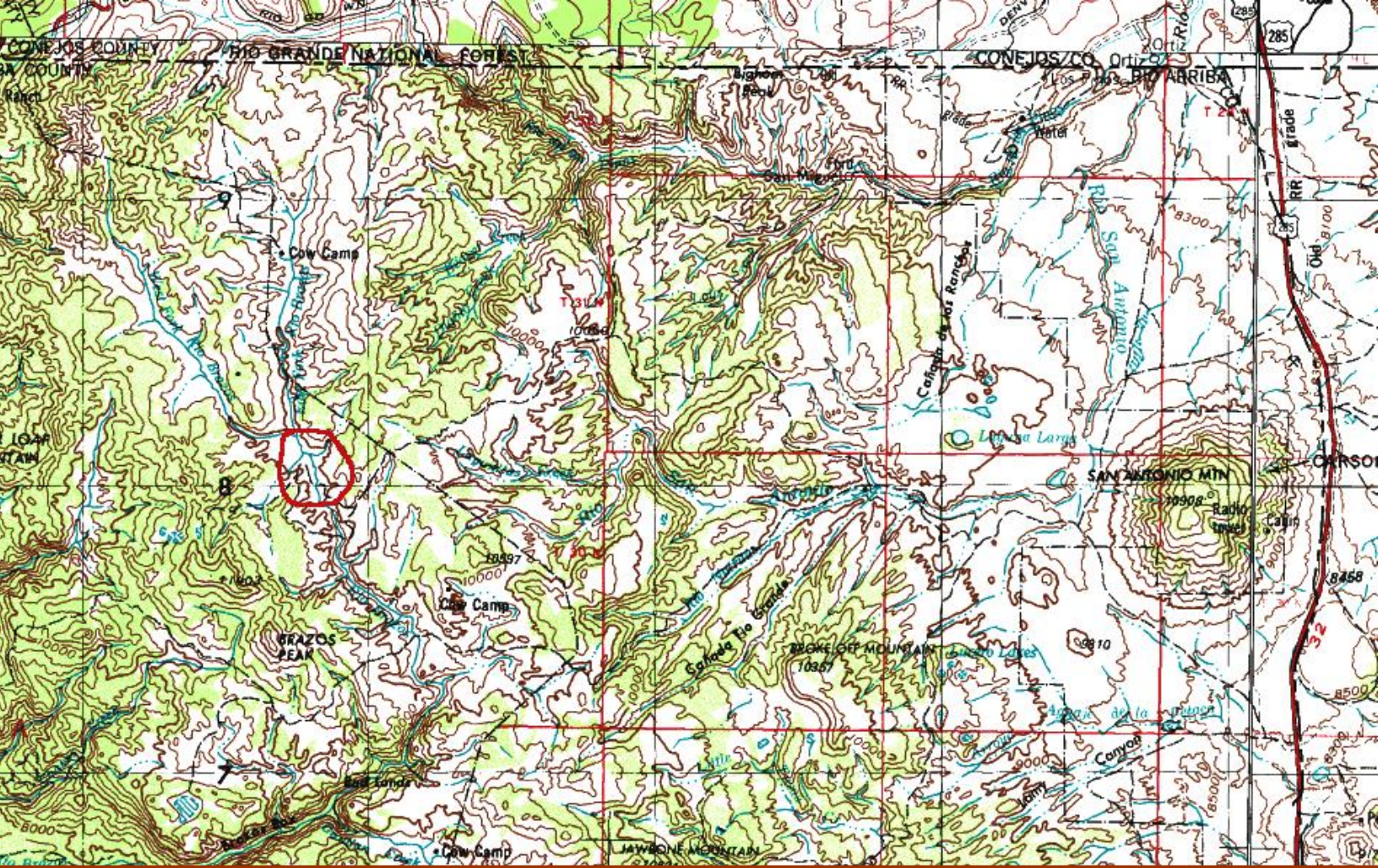
The 3.7 mile stretch of the Brazos River that runs through this ranch offers the best dry fly fishing in New Mexico and perhaps one of the best all-round wild trout fisheries in the Southwest. At an elevation of 10,000 feet, this part of the Brazos runs through a gigantic and breathtaking, open alpine meadow. Casting is not a problem as there are no trees along the banks. The river is packed with trout offering an angler the chance to catch large wild rainbows, all sizes of brook trout, cutthroats and cuttbows. There are also a couple of smaller streams flowing into the river which have the most brook trout you have ever seen in any stretch of water - often they will collide with one another trying to get to your flies! There are two ponds that are full of fish as well. Along with great fishing and incredible beauty, the Brazos River Ranch has a very large elk herd, lots of bald and golden eagles, tons of deer as well as many other types of wildlife. We recommend that you consider staying over for at least 1~2 nights. There are 6 nice cabins and gourmet meals provided.

Contact Land of Enchantment Guides for more information or to book your trip.

Phone: (505) 927-5356 or (505) 629-5688

Email: trout@loeflyfishing.com • Website: www.loeflyfishing.com





The above topographic map shows the area where the Brazos River Ranch is situated (the exact location is circled in red). It is in the middle of the Cruces Basin Wilderness and the Carson National Forrestr. The latitude / longitude for the ranch is: 36°52.286 N by 106° 20.272 W.





A few more pictures of the fishing and the river...



Some frequently asked questions...

- **What type of accommodations are there on the ranch?** We have (6) very comfortable, heated 12'x12' log cabins. Each cabin can accommodate up to 4 guests.
- **Is the ranch fairly accessible by auto? Do you need a 4 WD vehicle to get to the ranch?** The ranch is located 29 miles (dirt roads) from the paved highway (Hwy. 285) and is accessible by auto but, we strongly recommend some sort of high clearance 4WD vehicle - the last 6 miles can be a little rough (bumpy).
- **Where is the best airport to fly into on a commercial airline?** We recommend you fly into Albuquerque International Airport (ABQ), Albuquerque NM
- **If we fly in a smaller, private plane, where is the nearest private airport?** There are three airports that accommodate small aircraft - Alamosa, CO; Taos, NM and Santa Fe, NM. Santa Fe and Alamosa have car rental services.
- **How far is the ranch from Albuquerque?** The Ranch is about a 4± hour drive from Albuquerque, NM.
- **Do you need chest waders or hip waders? Is the water too cold to wet wade?** You can get by with hip waders just fine. Needless to say, earlier in the year when the water levels are higher, you will have to be careful in 1-2 places not to go over hip waders. The water in June can still be quite cold but if the days are warm and you are a hardy sort, you could wet wade. Wading gear and wading shoe re provided for you if you need them - just make sure to provide Land of Enchantment Guides with your shoe size, before you head up to the ranch.
- **Do I need to have my own fishing gear for the trip?** No. We can provide all of the fishing gear (rods & reels, tippet, flies, wading boots & waders, etc.) you will need for your trip, at no extra cost. This being said, if you have your own gear you would like to use, bring it along. Your guides will do their best to set your gear up for you, to suit each particular fishing spot you are at on the ranch.
- **How strenuous are the fishing conditions? About how far is the walking to fishing sites each day?** We drive right to the river. The river is in a wide open meadow so the walking is very easy but, if you have folks in your group who can't walk very far, they can still fish in some of the best water near the road. Most of the other spots along the river are within a 5 minute walk from the road with no ascending/descending of hills or inclines.
- **Can I get cell phone reception or is there a land-line telephone line I can use?** There is pretty good AT&T cell service rite at the ranch. There is no land line but people can always contact us up at the ranch via cell phone and text messages so contact with "the outside world" is really not an issue. The ranch also has wireless internet service so email is always an available option.
- **Will I encounter wild animals of the ranch?** Yes. There is an amazingly large elk herd and you usually see them in the morning and evening out in the meadows. There are also tons of mule deer and antelope. There are both bald and golden eagles and many types of hawks and falcons. Along the river there are also large colonies of some of the biggest marmots ever to be seen. Along with all of this you will see many other species of birds, foxes, coyotes and maybe a bobcat or two if you are lucky.
- **Have there ever been any encounters with "non-friendly" wild animals (i.e. bears, mountain lions, etc.) at the ranch ?** Over the past 14 years of operation, we have never had a guest that has had an encounter with a "non-friendly" animal. But, due to the location of the ranch (the middle of the Carson National Forest) there may be a slight chance in coming across a "non-friendly" wild animal. All wild animals are more afraid of us than we are of them and they shouldn't be characterized as either friendly or non-friendly. Basically, a person would have to be in the wrong place at the wrong time and doing very something foolish to provoke any wild animal into a dangerous encounter. Also, if you look at the pictures of the ranch and it's landscape, you will see that it is mostly wide-open alpine meadows. This is not the type of habitat where most bad encounters occur. There is very little cover so a guest at the ranch won't surprise or corner any wild animals. This is usually at the root of most dangerous encounters "non-friendly" wild animals.
- **Are fishermen allowed to keep a few fish to eat?** No, we do not allow any fish to be kept for eating or any other reason. All fishing on the ranch is "catch and release", using barbless hooks.
- **I have special dietary and/or health requirements; is that a problem?** No. We just need to discuss your requirements so that we can take care of them and accommodate your needs. We can provide meals and snacks to suit any dietary requirements or restrictions you may have.

The Brazos River Ranch ~ Land of Enchantment Guides Rates for 2012 Fly Fishing Season

Below are the rates for anglers/guests staying at The Brazos River Ranch during the 2012 fly fishing season. These prices are per person for one full day of guided fly fishing and one night's lodging (day/night). Included in the day/night price are fishing guides and a breakfast, lunch and dinner, all prepared by the ranch chef.

- Groups of 4 or more anglers/guests will have the ranch and the river to themselves, exclusively.
- All fishing gear, waders/wading shoes and flies are provided.
- All anglers must be guided.
- The prices are based on double occupancy in each cabin.
- Children are priced at a flat rate. The discounts for groups of four or more anglers/guests are based on adults and/or young adults over 12 years old.
- Any "non-fishing" guests must be accompanying a "fishing" guest.
- The "extra night stay" is only available for anglers/guests who have stayed for at least one full day/night of fishing and lodging.

The prices do not include NM sales tax or any tips/gratuities for the guides and ranch staff.



1 to 3 anglers/guests: \$650.00 per person per day/night (base price)

4 to 5 anglers/guests: \$552.50 per person per day/night (15% discount off base price)

6 more anglers/guests: \$520.00 per person per day/night (20% discount off base price)

Children under 12 years old: \$300.00 - per child per day/night (flat rate)

Children under 5 years old: No charge

Non-fishing guest: \$300 per person per day/night (flat rate)

Extra night stay with dinner: \$125.00 per person (flat rate)

Due to the short season and limited fishing dates on the ranch, a 50% deposit is required to secure your trip's dates. Deposits will only be refunded in full if a trip is cancelled 45 days previous to the arrival date. If possible, and if other dates are available, a trip may be moved to a later date. If for any unforeseen reason Land of Enchantment Guides or The Brazos River Ranch can not consummate your trip, we will return your deposit payment in full. The Brazos River Ranch reserves the right to refuse service to any person at anytime.

Contact Land of Enchantment Guides for more information or to book your trip.

Phone: (505) 927-5356 or (505) 629-5688

Email: trout@loeflyfishing.com • Website: www.loeflyfishing.com